



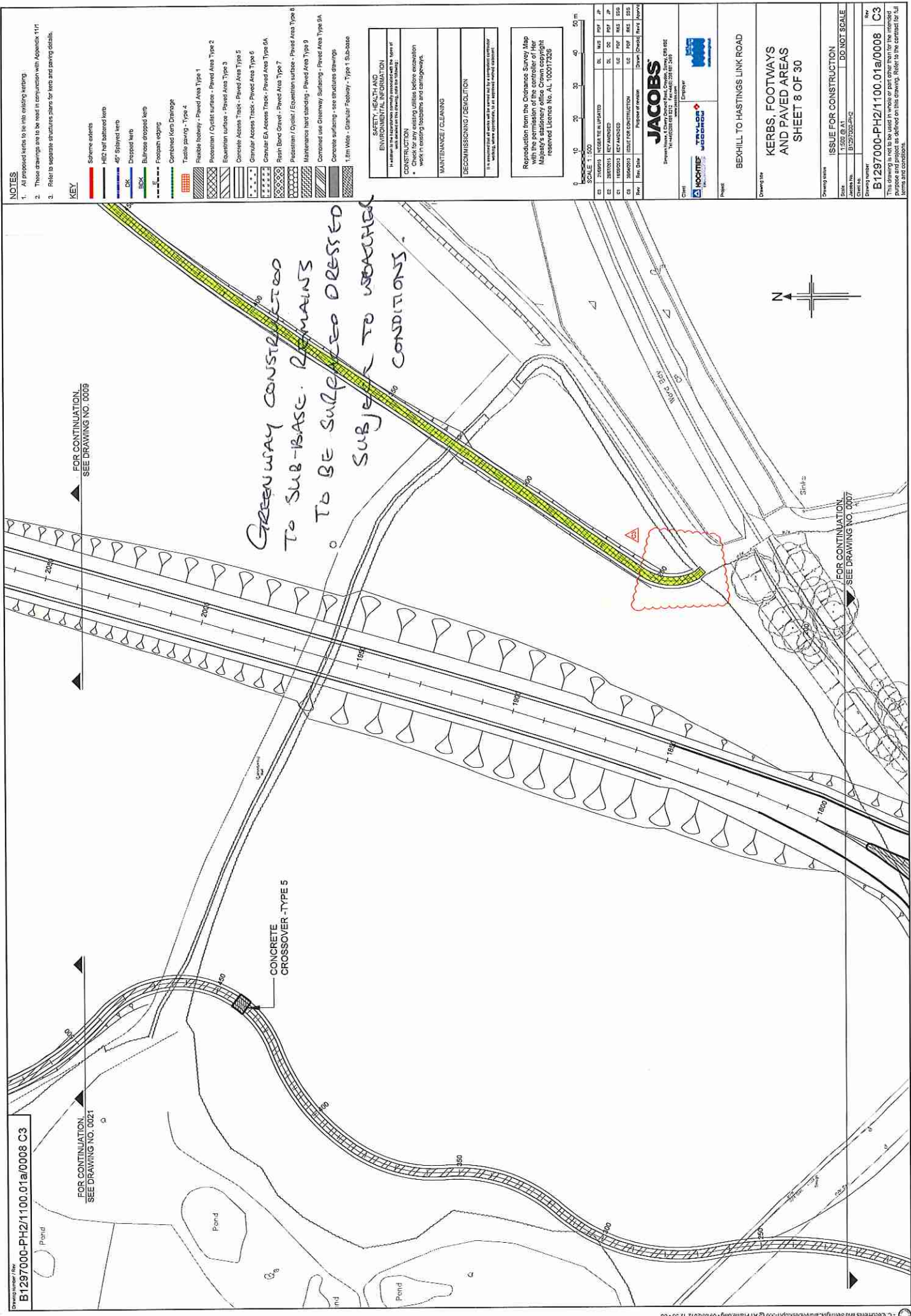
Drawing Number / Rev  
**B1297000-PH2/1100.01a/0008 C3**

FOR CONTINUATION,  
 SEE DRAWING NO. 0021

FOR CONTINUATION,  
 SEE DRAWING NO. 0009

*GREENWAY CONSTRUCTED  
 TO SUB-BASE. REMAINS  
 TO BE SUBJECT TO DRESSED  
 SUBJECT TO ROADWORK  
 CONDITIONS.*

CONCRETE  
 CROSSOVER -TYPE 5



**NOTES**

- All proposed kerbs to be into existing paving.
- These drawings are to be read in conjunction with Appendix 11/17
- Refer to separate structures plans for kerb and paving details.

**KEY**

- Scheme extents
- H&C half battered kerb
- 45° Sloped kerb
- SK
- Dropped kerb
- B&K
- Bullnose dropped kerb
- Fountain edging
- Combined Kerb Drainage
- Tactile paving - Type 4
- Flexible roadway - Paved Area Type 1
- Paved Area / Cyclist surface - Paved Area Type 2
- Excavation surface - Paved Area Type 3
- Concrete Access Track - Paved Area Type 5
- Granular Access Track - Paved Area Type 6
- Granular EA Access Track - Paved Area Type 9A
- Repair / Bed Cover - Paved Area Type 7
- Paved Area / Cyclist / Excavation surface - Paved Area Type 8
- Maintenance hard standing - Paved Area Type 9
- Concrete surfacing - see structures drawings
- 1.5m Wide - Granular Roadway - Type 1 Sub-base

<b>SAFETY, HEALTH AND ENVIRONMENTAL INFORMATION</b>	
It is the responsibility of the contractor to ensure that all work is carried out in accordance with the relevant legislation.	
<b>CONSTRUCTION</b>	
Check for any existing utilities before excavation work in existing footpaths and verges.	
<b>MAINTENANCE / CLEANING</b>	
<b>DECOMMISSIONING / REVOLUTION</b>	
It is the responsibility of the contractor to ensure that all work is carried out in accordance with the relevant legislation.	

Reproduction from the Ordnance Survey Map with the permission of the controller of Her Majesty's Stationery Office under Licence No. AL100017329

SCALE: 1:500  
 0 10 20 30 40 50 m

Rev	Date	Proposed revision	Drawn (Drawn)	Checkd (Checkd)
01	21/04/2015	ISSUE FOR CONSTRUCTION	DL	MP
02	28/07/2015	REVISED	DL	DC
03	28/07/2015	REVISED	DL	DC
04	28/07/2015	ISSUE FOR CONSTRUCTION	DL	DC
05	28/07/2015	ISSUE FOR CONSTRUCTION	DL	DC

**JACOBS**  
 Project: BEXHILL TO HASTINGS LINK ROAD

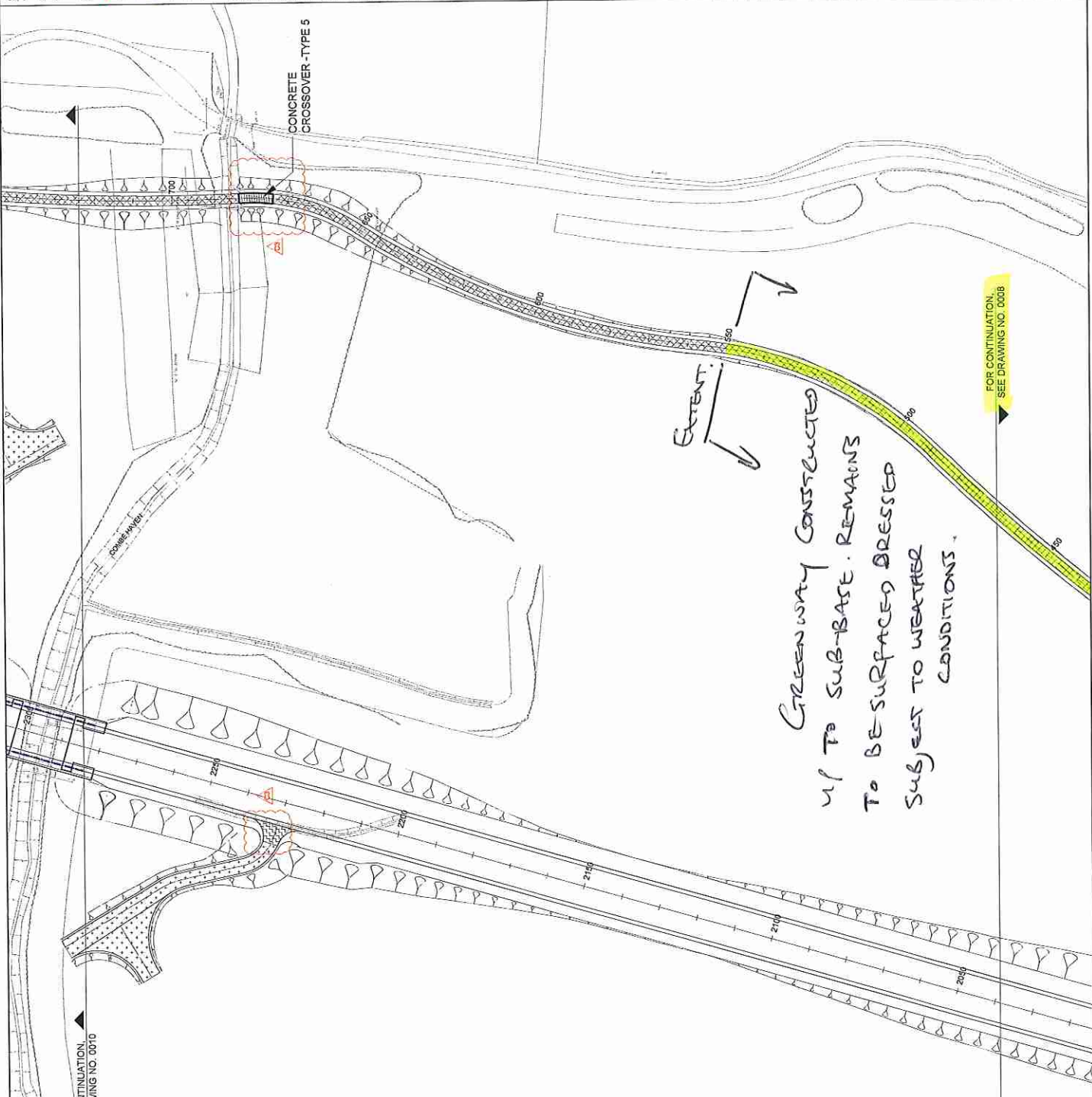
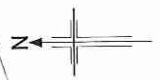
Client: **HOCHTIEF**  
 Project: BEXHILL TO HASTINGS LINK ROAD

Project: BEXHILL TO HASTINGS LINK ROAD  
 Drawing Title: KERBS, FOOTWAYS AND PAVED AREAS  
 SHEET 8 OF 30

Drawing Status: ISSUE FOR CONSTRUCTION  
 Scale: 1:500 (B. A1)  
 Drawing No.: B1297000-PH2  
 Drawing Title: BEXHILL TO HASTINGS LINK ROAD  
 Drawing No.: B1297000-PH2/1100.01a/0008  
 Rev: C3

This drawing is not to be used in whole or part other than for the intended purpose as defined on this drawing. Refer to the contract for full terms and conditions.

FOR CONTINUATION,  
SEE DRAWING NO. 0010



**NOTES**

- All proposed works to be into existing setting.
- These drawings are to be read in conjunction with Appendix 11/1
- Refer to separate structures sheets for kerbs and paving details.

**KEY**

- Schematic extents
- H&H half battered kerb
- 45° Splayed kerb
- DK Driveway kerb
- BSK Bulb nose dropped kerb
- Footpath coping
- Combined Kerb Drainage
- Tactile paving - Type 4
- Flexible footway - Paved Area Type 1
- Paved Area Type 2
- Paved Area Type 3
- Paved Area Type 4
- Paved Area Type 5
- Paved Area Type 6A
- Paved Area Type 7
- Paved Area Type 8
- Paved Area Type 9
- Paved Area Type 10
- Paved Area Type 11
- Paved Area Type 12
- Paved Area Type 13
- Paved Area Type 14
- Paved Area Type 15
- Paved Area Type 16
- Paved Area Type 17
- Paved Area Type 18
- Paved Area Type 19
- Paved Area Type 20
- Paved Area Type 21
- Paved Area Type 22
- Paved Area Type 23
- Paved Area Type 24
- Paved Area Type 25
- Paved Area Type 26
- Paved Area Type 27
- Paved Area Type 28
- Paved Area Type 29
- Paved Area Type 30
- Paved Area Type 31
- Paved Area Type 32
- Paved Area Type 33
- Paved Area Type 34
- Paved Area Type 35
- Paved Area Type 36
- Paved Area Type 37
- Paved Area Type 38
- Paved Area Type 39
- Paved Area Type 40
- Paved Area Type 41
- Paved Area Type 42
- Paved Area Type 43
- Paved Area Type 44
- Paved Area Type 45
- Paved Area Type 46
- Paved Area Type 47
- Paved Area Type 48
- Paved Area Type 49
- Paved Area Type 50
- Paved Area Type 51
- Paved Area Type 52
- Paved Area Type 53
- Paved Area Type 54
- Paved Area Type 55
- Paved Area Type 56
- Paved Area Type 57
- Paved Area Type 58
- Paved Area Type 59
- Paved Area Type 60
- Paved Area Type 61
- Paved Area Type 62
- Paved Area Type 63
- Paved Area Type 64
- Paved Area Type 65
- Paved Area Type 66
- Paved Area Type 67
- Paved Area Type 68
- Paved Area Type 69
- Paved Area Type 70
- Paved Area Type 71
- Paved Area Type 72
- Paved Area Type 73
- Paved Area Type 74
- Paved Area Type 75
- Paved Area Type 76
- Paved Area Type 77
- Paved Area Type 78
- Paved Area Type 79
- Paved Area Type 80
- Paved Area Type 81
- Paved Area Type 82
- Paved Area Type 83
- Paved Area Type 84
- Paved Area Type 85
- Paved Area Type 86
- Paved Area Type 87
- Paved Area Type 88
- Paved Area Type 89
- Paved Area Type 90
- Paved Area Type 91
- Paved Area Type 92
- Paved Area Type 93
- Paved Area Type 94
- Paved Area Type 95
- Paved Area Type 96
- Paved Area Type 97
- Paved Area Type 98
- Paved Area Type 99
- Paved Area Type 100

**CONSTRUCTION**

- Check existing conditions before excavation work in existing footpaths and drainage.
- Check existing conditions before excavation work in existing footpaths and drainage.

**MAINTENANCE / CLEANING**

**DECOMMISSIONING / DEMOLITION**

If an element of a structure is to be removed, it should be removed in a controlled manner to avoid damage to adjacent structures.

1.5m Wide - Granular Footway - Type 1 - Sub-base

1.5m Wide - Granular Footway - Type 1 - Sub-base

1.5m Wide - Granular Footway - Type 1 - Sub-base

1.5m Wide - Granular Footway - Type 1 - Sub-base

1.5m Wide - Granular Footway - Type 1 - Sub-base

1.5m Wide - Granular Footway - Type 1 - Sub-base

1.5m Wide - Granular Footway - Type 1 - Sub-base

1.5m Wide - Granular Footway - Type 1 - Sub-base

1.5m Wide - Granular Footway - Type 1 - Sub-base

1.5m Wide - Granular Footway - Type 1 - Sub-base

1.5m Wide - Granular Footway - Type 1 - Sub-base

1.5m Wide - Granular Footway - Type 1 - Sub-base

1.5m Wide - Granular Footway - Type 1 - Sub-base

1.5m Wide - Granular Footway - Type 1 - Sub-base

1.5m Wide - Granular Footway - Type 1 - Sub-base

1.5m Wide - Granular Footway - Type 1 - Sub-base

**REPRODUCTION**

Reproduction from this Copyright Status Map is prohibited without the written consent of the copyright owner. The copyright owner is the Crown in right of the State of Victoria. Copyright reserved. License No. A1.100017325

0 10 20 30 40 50m

SCALE 1:500

0 10 20 30 40 50m

SCALE 1:500

0 10 20 30 40 50m

SCALE 1:500

0 10 20 30 40 50m

SCALE 1:500

0 10 20 30 40 50m

SCALE 1:500

0 10 20 30 40 50m

SCALE 1:500

0 10 20 30 40 50m

SCALE 1:500

0 10 20 30 40 50m

SCALE 1:500

0 10 20 30 40 50m

SCALE 1:500

0 10 20 30 40 50m

SCALE 1:500

0 10 20 30 40 50m

SCALE 1:500

0 10 20 30 40 50m

SCALE 1:500

0 10 20 30 40 50m

SCALE 1:500

0 10 20 30 40 50m

SCALE 1:500

0 10 20 30 40 50m

SCALE 1:500

0 10 20 30 40 50m

SCALE 1:500

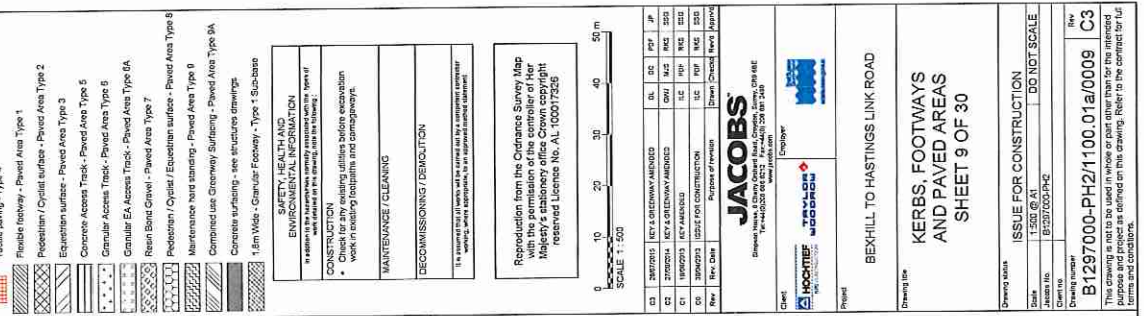
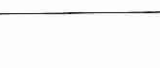
0 10 20 30 40 50m

SCALE 1:500

0 10 20 30 40 50m

SCALE 1:500

FOR CONTINUATION,  
SEE DRAWING NO. 0010



**NOTES**

- All proposed works to be into existing setting.
- These drawings are to be read in conjunction with Appendix 11/1
- Refer to separate structures sheets for kerbs and paving details.

**KEY**

- Schematic extents
- H&H half battered kerb
- 45° Splayed kerb
- DK Driveway kerb
- BSK Bulb nose dropped kerb
- Footpath coping
- Combined Kerb Drainage
- Tactile paving - Type 4
- Flexible footway - Paved Area Type 1
- Paved Area Type 2
- Paved Area Type 3
- Paved Area Type 4
- Paved Area Type 5
- Paved Area Type 6A
- Paved Area Type 7
- Paved Area Type 8
- Paved Area Type 9
- Paved Area Type 10
- Paved Area Type 11
- Paved Area Type 12
- Paved Area Type 13
- Paved Area Type 14
- Paved Area Type 15
- Paved Area Type 16
- Paved Area Type 17
- Paved Area Type 18
- Paved Area Type 19
- Paved Area Type 20
- Paved Area Type 21
- Paved Area Type 22
- Paved Area Type 23
- Paved Area Type 24
- Paved Area Type 25
- Paved Area Type 26
- Paved Area Type 27
- Paved Area Type 28
- Paved Area Type 29
- Paved Area Type 30
- Paved Area Type 31
- Paved Area Type 32
- Paved Area Type 33
- Paved Area Type 34
- Paved Area Type 35
- Paved Area Type 36
- Paved Area Type 37
- Paved Area Type 38
- Paved Area Type 39
- Paved Area Type 40
- Paved Area Type 41
- Paved Area Type 42
- Paved Area Type 43
- Paved Area Type 44
- Paved Area Type 45
- Paved Area Type 46
- Paved Area Type 47
- Paved Area Type 48
- Paved Area Type 49
- Paved Area Type 50
- Paved Area Type 51
- Paved Area Type 52
- Paved Area Type 53
- Paved Area Type 54
- Paved Area Type 55
- Paved Area Type 56
- Paved Area Type 57
- Paved Area Type 58
- Paved Area Type 59
- Paved Area Type 60
- Paved Area Type 61
- Paved Area Type 62
- Paved Area Type 63
- Paved Area Type 64
- Paved Area Type 65
- Paved Area Type 66
- Paved Area Type 67
- Paved Area Type 68
- Paved Area Type 69
- Paved Area Type 70
- Paved Area Type 71
- Paved Area Type 72
- Paved Area Type 73
- Paved Area Type 74
- Paved Area Type 75
- Paved Area Type 76
- Paved Area Type 77
- Paved Area Type 78
- Paved Area Type 79
- Paved Area Type 80
- Paved Area Type 81
- Paved Area Type 82
- Paved Area Type 83
- Paved Area Type 84
- Paved Area Type 85
- Paved Area Type 86
- Paved Area Type 87
- Paved Area Type 88
- Paved Area Type 89
- Paved Area Type 90
- Paved Area Type 91
- Paved Area Type 92
- Paved Area Type 93
- Paved Area Type 94
- Paved Area Type 95
- Paved Area Type 96
- Paved Area Type 97
- Paved Area Type 98
- Paved Area Type 99
- Paved Area Type 100

**CONSTRUCTION**

- Check existing conditions before excavation work in existing footpaths and drainage.
- Check existing conditions before excavation work in existing footpaths and drainage.

**MAINTENANCE / CLEANING**

**DECOMMISSIONING / DEMOLITION**

If an element of a structure is to be removed, it should be removed in a controlled manner to avoid damage to adjacent structures.

1.5m Wide - Granular Footway - Type 1 - Sub-base

1.5m Wide - Granular Footway - Type 1 - Sub-base

1.5m Wide - Granular Footway - Type 1 - Sub-base

1.5m Wide - Granular Footway - Type 1 - Sub-base

1.5m Wide - Granular Footway - Type 1 - Sub-base

1.5m Wide - Granular Footway - Type 1 - Sub-base

1.5m Wide - Granular Footway - Type 1 - Sub-base

1.5m Wide - Granular Footway - Type 1 - Sub-base

1.5m Wide - Granular Footway - Type 1 - Sub-base

1.5m Wide - Granular Footway - Type 1 - Sub-base

1.5m Wide - Granular Footway - Type 1 - Sub-base

1.5m Wide - Granular Footway - Type 1 - Sub-base

1.5m Wide - Granular Footway - Type 1 - Sub-base

1.5m Wide - Granular Footway - Type 1 - Sub-base

**REPRODUCTION**

Reproduction from this Copyright Status Map is prohibited without the written consent of the copyright owner. The copyright owner is the Crown in right of the State of Victoria. Copyright reserved. License No. A1.100017325

0 10 20 30 40 50m

SCALE 1:500

0 10 20 30 40 50m

SCALE 1:500

0 10 20 30 40 50m

SCALE 1:500

0 10 20 30 40 50m

SCALE 1:500

0 10 20 30 40 50m

SCALE 1:500

0 10 20 30 40 50m

SCALE 1:500

0 10 20 30 40 50m

SCALE 1:500

0 10 20 30 40 50m

SCALE 1:500

0 10 20 30 40 50m

SCALE 1:500

0 10 20 30 40 50m

SCALE 1:500

0 10 20 30 40 50m

SCALE 1:500

0 10 20 30 40 50m

SCALE 1:500

0 10 20 30 40 50m

SCALE 1:500

0 10 20 30 40 50m

SCALE 1:500

0 10 20 30 40 50m

SCALE 1:500

0 10 20 30 40 50m

SCALE 1:500

0 10 20 30 40 50m

SCALE 1:500

**REPRODUCTION**

Reproduction from this Copyright Status Map is prohibited without the written consent of the copyright owner. The copyright owner is the Crown in right of the State of Victoria. Copyright reserved. License No. A1.100017325

0 10 20 30 40 50m

SCALE 1:500

0 10 20 30 40 50m

SCALE 1:500

0 10 20 30 40 50m

SCALE 1:500

0 10 20 30 40 50m

SCALE 1:500

0 10 20 30 40 50m

SCALE 1:500

0 10 20 30 40 50m

SCALE 1:500

0 10 20 30 40 50m

SCALE 1:500

0 10 20 30 40 50m

SCALE 1:500

0 10 20 30 40 50m

SCALE 1:500

0 10 20 30 40 50m

SCALE 1:500

0 10 20 30 40 50m

SCALE 1:500

0 10 20 30 40 50m

SCALE 1:500

0 10 20 30 40 50m

SCALE 1:500

0 10 20 30 40 50m

SCALE 1:500

0 10 20 30 40 50m

SCALE 1:500

0 10 20 30 40 50m

SCALE 1:500

0 10 20 30 40 50m

SCALE 1:500

**REPRODUCTION**

Reproduction from this Copyright Status Map is prohibited without the written consent of the copyright owner. The copyright owner is the Crown in right of the State of Victoria. Copyright reserved. License No. A1.100017325

0 10 20 30 40 50m

SCALE 1:500

0 10 20 30 40 50m

SCALE 1:500

0 10 20 30 40 50m

SCALE 1:500

0 10 20 30 40 50m

SCALE 1:500

0 10 20 30 40 50m