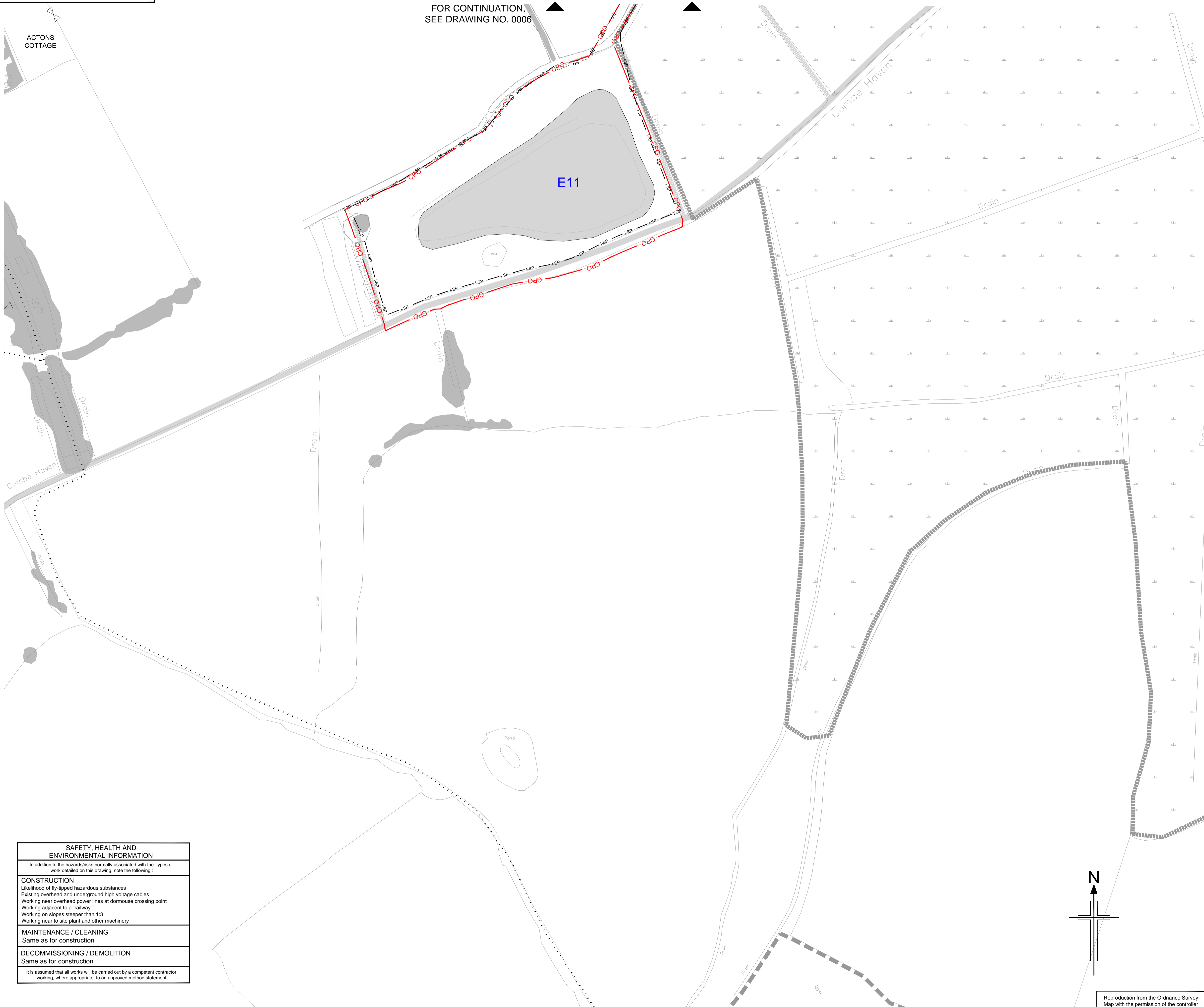


FOR CONTINUATION,
 SEE DRAWING NO. 0006



NOTES

- All dimensions in metres unless otherwise stated.
- Fencing layout shown is due for revision. Planting shown is consistent with fencing and barriers as constructed.
- For fencing key, refer to fencing drawings.

KEY

- High Forest - Dry (Planting at 2m centres, random mix in groups of 3-5 of each species) (LE2.1 and LE2.4.1)
- High Forest - Dry (Planting at 2.5m centres, random mix in groups of 3-5 of each species) (LE2.1 and LE2.4.1)
- High Forest - Wet (Planting at 2m centres, random mix in groups of 3-5 of each species) (LE2.1 and LE2.4.1)
- High Forest - Wet (Planting at 2.5m centres, random mix in groups of 3-5 of each species) (LE2.1 and LE2.4.1)
- Dry Woodland Edge (3m wide, planting at approximately 1.2 - 1.5m centres in three staggered rows, random mix of 3-5 species (LE2.1 and LE2.4.1) Care must be taken not to plant in obvious or straight lines. Refer to plant spacing detail on drawing B1297000/3000.01a/0001
- Wet Woodland Edge (3m wide, planting at approximately 1.2 - 1.5m centres in three staggered rows, random mix of 3-5 species (LE2.1 and LE2.4.1) Care must be taken not to plant in obvious or straight lines. Refer to plant spacing detail on drawing B1297000/3000.01a/0001
- Scrub random mix in groups of 3 - 5 of each species (LE2.8)
- Wetland Scrub random mix in groups of 3 - 5 of each species (LE2.8)
- Existing Woodland to be managed (LE2.1.1)
- Existing Woodland Edge to be Managed (LE2.2)
- Scattered Trees in Wet Grassland, Marsh and Fen (LE6.4.1.1) Refer to plant spacing detail on drawing B1297000/3000.01a/0001
- Scattered Scrub in Neutral Grassland (LE6.1.3.1) Refer to plant spacing detail on drawing B1297000/3000.01a/0001
- Climbing plants on fences and structures - 4m linear spacing unless otherwise noted.
- Woodland/woodland edge infill planting
- Amenity Tree and Shrub Planting (LE3.1)
- Extra heavy standard, semi-mature tree or multi-stem tree
- Site of Special Scientific Interest (SSSI)
- Site of Nature Conservation Importance (SNCI)
- Native Species Hedgerows (LE4.3) Two staggered rows, planted at 0.5m centres, 0.5m between rows
- Native Hedgerows with Trees (LE4.4) Two staggered rows, planted at 0.5m centres, 0.5m between rows. Trees shall be planted between rows at an average of 10m - 15m centres
- Ditch
- Watercourse
- Pond
- Public Footpath
- Byway
- Bridleway
- Existing trees, hedges & scrub to be retained
- Woodland management zones
- CPO boundary

0 10 20 30 40 50 60 70 80 90 100 m
 SCALE 1 : 1000

C1	11/08/2015	Plant Schedule Updated to Match Changes	CC	AS	TD	JP
CO	26/07/2013	ISSUE FOR CONSTRUCTION	AS	RM	RM	AB
Rev	Rev. Date	Purpose of revision	Drawn	Checked	Rev'd	Apprv'd

JACOBS
 Simpson House, 6 Cherry Orchard Road, Croydon, Surrey, CR9 6BE
 Tel:+44(0)208 686 8212 Fax:+44(0) 208 681 2499
 www.jacobs.com

Client: **HOCHTIEF** (RM CONSTRUCTION), **TEYLOR WOODROW**, **South East Group**
 Employer: **South East Group**

Project: **BEXHILL TO HASTINGS LINK ROAD**

Drawing title: **PLANTING SHEET 11 OF 14**

Drawing status: **FOR CONSTRUCTION**

Scale	1:1000 @ A1	DO NOT SCALE
Jacobs No.	B1297000	
Client no.		
Drawing number	B1297000-PH2/3000.01a/0011	Rev
		C1

This drawing is not to be used in whole or part other than for the intended purpose and project as defined on this drawing. Refer to the contract for full terms and conditions.

SAFETY, HEALTH AND ENVIRONMENTAL INFORMATION

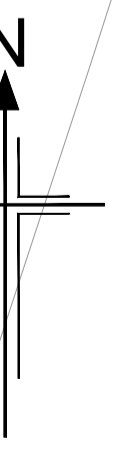
In addition to the hazards/risks normally associated with the types of work detailed on this drawing, note the following:

CONSTRUCTION
 Likelihood of fly-tipped hazardous substances
 Existing overhead and underground high voltage cables
 Working near overhead power lines at domouse crossing point
 Working adjacent to a railway
 Working on slopes steeper than 1:3
 Working near to site plant and other machinery

MAINTENANCE / CLEANING
 Same as for construction

DECOMMISSIONING / DEMOLITION
 Same as for construction

It is assumed that all works will be carried out by a competent contractor working, where appropriate, to an approved method statement



Reproduction from the Ordnance Survey Map with the permission of the controller of Her Majesty's stationery office Crown copyright reserved Licence No. AL 100017326