

**NOTES**

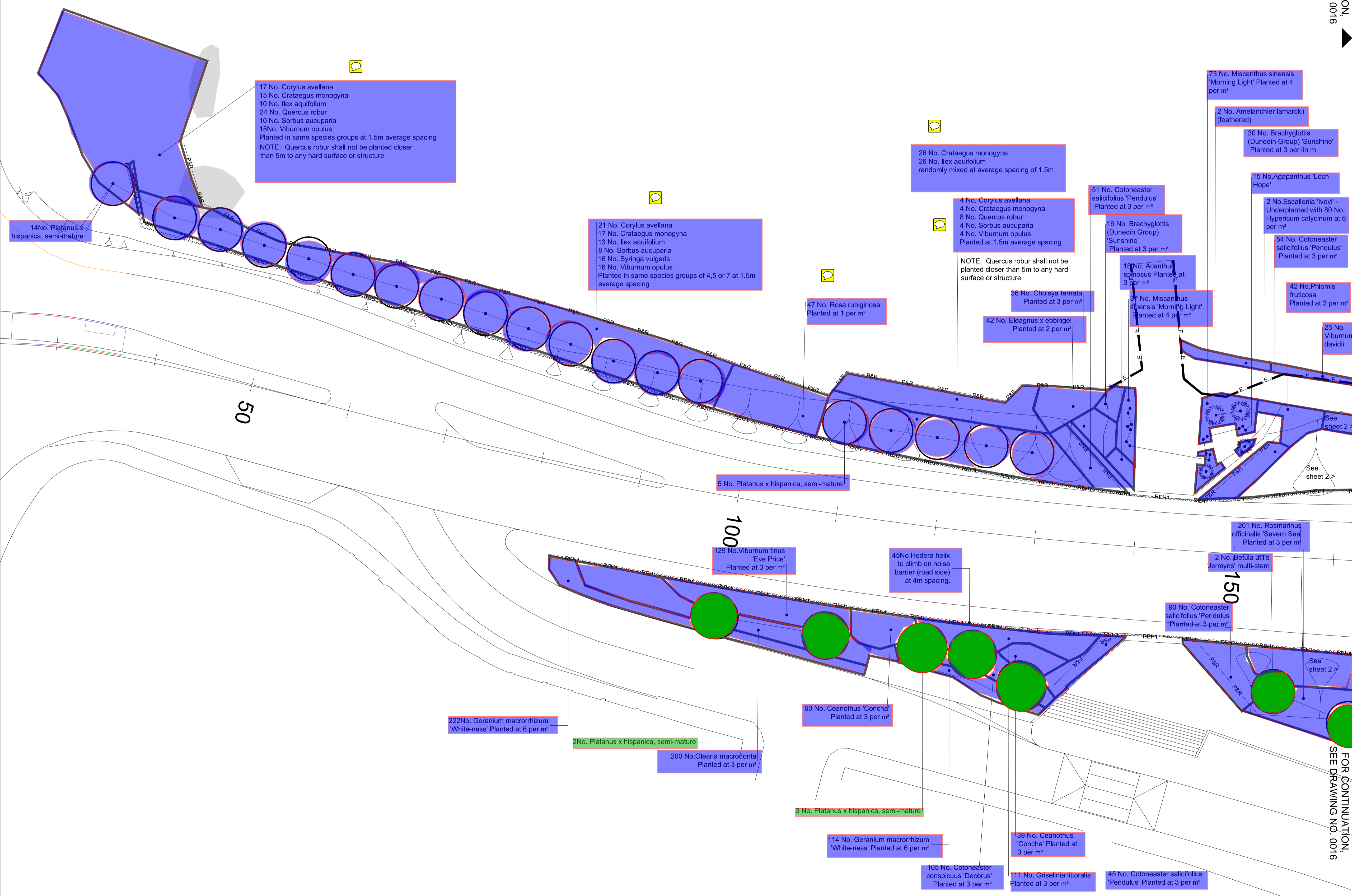
- All dimensions in metres unless otherwise stated
- The fencing and noise barriers lay-out shown is due for revision. The planting lay-out shown matches the position of the noise barriers as constructed on site..

**KEY**

- Semi-mature or multi-stem tree
- Container grown tree or large shrub species planted without specified clear stem
- Planting plot boundary
- Self-clinging climbing plants to grow on noise barrier, roadside/trackside only. Species and quantities shown on planting drawing B1297000-PH2/3000.01a/0002.
- 1.2m high timber post and wire fence with badger proofing (HCD/H13 + H46).
- 1.8m high absorptive noise barrier
- 1.8m high reflective noise barrier
- Timber post and four rail fence (HCD/H3)

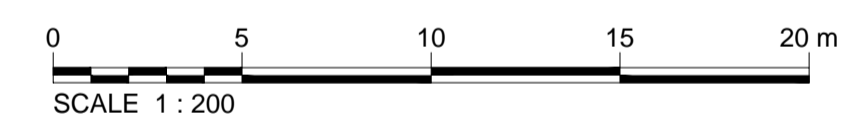
FOR CONTINUATION, SEE DRAWING NO. 0016

FOR CONTINUATION, SEE DRAWING NO. 0016



Note: The planting schedule for this drawing is on drawing B1297000-PH2/3000.01a/0017

SAFETY, HEALTH AND ENVIRONMENTAL INFORMATION	
In addition to the hazards/risks normally associated with the types of work detailed on this drawing, note the following:	
<b>CONSTRUCTION</b> Likelihood of fly-tipped hazardous substances Existing overhead and underground high voltage cables Working near overhead power lines at dormouse crossing point Working adjacent to a railway Working on slopes steeper than 1:3 Working near to site plant and other machinery	
<b>MAINTENANCE / CLEANING</b> Same as for construction	
<b>DECOMMISSIONING / DEMOLITION</b> Same as for construction	
It is assumed that all works will be carried out by a competent contractor working, where appropriate, to an approved method statement	



Rev	Rev. Date	Purpose of revision	Drawn	Checked	Rev'd	Appr'd
C3	04/11/2015	Planting revs to match scheme changes	AS	RM	RM	PDF
C2	11/08/2015	Plant Schedule Updated to Match Changes	CC	AS	TD	JP
C1	02/03/2015	Rev. to match minor scheme layout changes	AS	RM	AB	JP
C0	26/07/2013	ISSUE FOR CONSTRUCTION	AS	RM	RM	AB

**JACOBS**

Simpson House, 6 Cherry Orchard Road, Croydon, Surrey, CR9 6BE  
Tel: +44(0)208 686 8212 Fax: +44(0) 208 681 2499  
www.jacobs.com

Client:

**BEXHILL TO HASTINGS LINK ROAD**

Drawing title  
**PLANTING BELLE HILL SHEET 1 OF 3**

Drawing status: **FOR CONSTRUCTION**

Scale: 1:200 @ A1 DO NOT SCALE  
Jacobs No. B1297000  
Client no.

Drawing number: **B1297000-PH2/3000.01a/0015** Rev **C3**

Reproduction from the Ordnance Survey Map with the permission of the controller of Her Majesty's stationery office Crown copyright reserved Licence No. AL 100017326