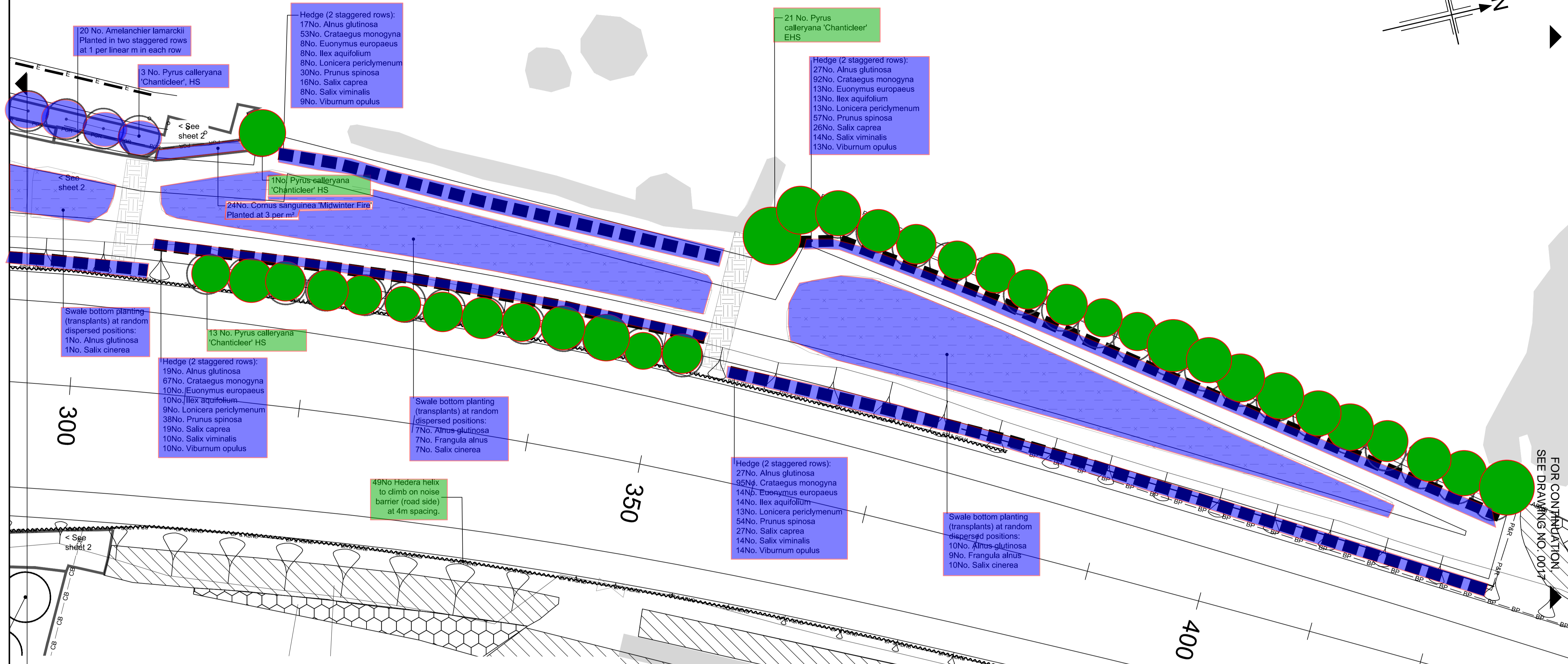
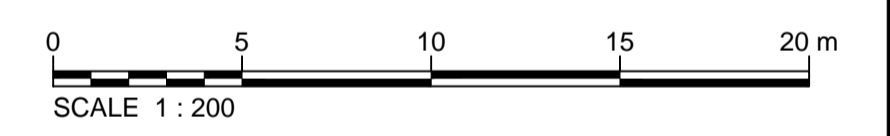


Drawing number / Rev
B1297000-PH2/3000.01a/0017 C3



- NOTES**
- All dimensions in metres unless otherwise stated
 - The fencing and noise barriers lay-out shown is due for revision. The planting lay-out shown matches the position of the noise barriers as constructed on site..
- KEY**
- Semi-mature or multi-stem tree
 - Container grown tree or large shrub species planted without specified clear stem
 - Planting plot boundary
 - Planting zone in bottom of swale
 - Self-clinging climbing plants to grow on noise barrier, roadside/trackside only. Species and quantities shown on planting drawings B1297000-PH2/3000.01a/0002 and 0003.
- BP — 1.2m high timber post and wire fence with badger proofing (HCD/H13 + H46).
 - ABNB — 1.8m high absorptive noise barrier
 - REH1 — 1.8m high reflective Noise Barrier
 - P&R — Timber post and four rail fence (HCD/H3)

SAFETY, HEALTH AND ENVIRONMENTAL INFORMATION	
In addition to the hazards/risks normally associated with the types of work detailed on this drawing, note the following:	
CONSTRUCTION Likelihood of fly-tipped hazardous substances Existing overhead and underground high voltage cables Working near overhead power lines at dormouse crossing point Working adjacent to a railway Working on slopes steeper than 1:3 Working near to site plant and other machinery	
MAINTENANCE / CLEANING Same as for construction	
DECOMMISSIONING / DEMOLITION Same as for construction	
It is assumed that all works will be carried out by a competent contractor working, where appropriate, to an approved method statement.	



PLANTING SCHEDULE FOR DRAWINGS B1297000-PH2/3000.01a/0015-17

No.	SPECIES	SPECIFICATION	HEIGHT	GIRTH	POT SIZE
Trees					
3	Alnus cordata	4x semi-mature tree :2m clear stem :RB	min. 450cm	25-30cm	
127	Alnus glutinosa	1+1: Transplant: BR	60-80cm		
2	Betula utilis 'Jermyns'	4x multi-stem (3 stems) :C	350-400cm		200L
1	Catalpa bignonioides	3x Extra Heavy Standard :2m clear stem :RB	400-450cm	14-16cm	
573	Crataegus monogyna	1+1: Transplant: BR	40-60cm		
116	Ilex aquifolium	bushy :2 breaks :C	30-40cm		2L
32	Quercus robur	1u1: Seedling (undercut): BR	60-80cm		
41	Platanus x hispanica	4x semi-mature tree :2m clear stem :RB	min. 450cm	25-30cm	
1	Prunus 'Snow Goose'	4x semi-mature tree :2m clear stem :RB	min. 450cm	25-30cm	
21	Pyrus calleryana 'Chanticleer'	3x Extra Heavy Standard :2m clear stem :RB	min. 450cm	18-20cm	
22	Pyrus calleryana 'Chanticleer'	3x Heavy Standard :2m clear stem :RB	min. 350cm	12-14cm	
2	Sorbus aucuparia	4x semi-mature tree:2m clear stem :RB	min. 450cm	20-25cm	
22	Sorbus aucuparia	1+0: transplant: BR	60-80cm		
Shrubs					
1	Abutilon x suntuense 'Jermyns'	branched :3 breaks :C	60-80-30cm		3L
3	Acacia baileyana	half standard :C	180-200cm		12L
140	Amelanchier lamarkii	Transplant 1+1: BR	60-80cm		
2	Amelanchier lamarkii	feathered :3 breaks :C	150-175cm		15L
223	Brachyglottis 'Sunshine' (Senecio 'Sunshine')	branched :3 breaks :C	20-30cm		2L
252	Ceanothus 'Concha'	branched :3 breaks :C	20-30cm		2L
36	Choisya ternata	bushy :4 breaks :C	30-40cm		3L
600	Choisya ternata 'Aztec Pearl'	bushy :4 breaks :C	30-40cm		3L
318	Cistus ladanifer 'Pat'	bushy :4 breaks :C	30-40cm		3L
151	Cornus sanguinea 'Midwinter Fire'	branched:3 breaks :C	60-80cm		2L
92	Corylus avellana	1+2: branched :3 breaks :BR	60-80cm		
692	Cotoneaster conspicuus 'Decorus'	branched :3 breaks :C	20-30cm		2L
654	Cotoneaster dammeri	20-30cm diameter :bushy :3 breaks :C			2L
240	Cotoneaster salicifolius 'Pendulus'	branched :2 breaks :C	40-60cm		3L
42	Elaeagnus x ebbingei	branched :C	40-60cm		3L
2	Escallonia 'Ivey'	bushy :C	40-60cm		3L
52	Euonymus europaeus	1+0 :Bushy :3 brks :BR	40-60cm		
70	Forsythia intermedia 'Lynwood'	branched :4 breaks :C	40-60cm		3L
21	Frangula alnus	Transplant 1Y: BR	40-60cm		
741	Griselinia littoralis	bushy :3 breaks :C	40-60cm		3L
584	Hebe 'Carl Teschner' (syn H. youngii)	bushy :3 breaks :C	30-40cm		2L
182	Hedera helix	Several Shoots	40-60cm		2L
6	Lonicera japonica 'Halliana'	Several Shoots :2 breaks :C	60-80cm		3L
800	Lonicera pileata 'Moss Green'	bushy :6 breaks :C	30-40cm dia		3L
50	Lonicera periclymenum	Several Shoots :2 breaks :C	60-80cm		3L
30	Myrtus communis	bushy :C	40-60cm		3L

NO.	SPECIES	SPECIFICATION	HEIGHT	POT SIZE
Shrubs continued				
371	Olearia x macrodonta	bushy :4 breaks :C	40-60cm	3L
22	Philadelphus 'Belle Etoile'	branched :4 breaks :C	30-40cm	3L
50	Philadelphus coronarius	branched :3 breaks :BR	40-60cm	
42	Phlomis frutescens	bushy :C	40-60cm	3L
207	Prunus spinosa	1+1 :Leader :BR	40-60cm	
2	Rhus typhina 'Dissecta'	two shoots :C	60-80cm	4L
128	Rosa rubiginosa	1+1: bushy, strong :BR	40-60cm	
627	Rosmarinus officinalis 'Seyvern Sea'	bushy :3 breaks :C	30-40cm	2L
102	Salix caprea	0/1 :Branched: 2 brks :BR	60-80cm	
23	Salix cinerea	0/1: Branched: 2brks :BR	60-80cm	
53	Salix viminalis	0/1 :Branched :2 brks :BR	60-80cm	
402	Spartium junceum	branched :3 breaks :C	40-60cm	2L
81	Syringa vulgaris	1+1: branched :2 breaks :BR	40-60cm	
11	Syringa vulgaris 'Madame Lemoine'	branched :2 breaks :BR	60-80cm	
98	Viburnum davidii	branched:2 breaks :C	20-30cm	2L
184	Viburnum opulus	branched :2 breaks :BR	40-60cm	
324	Viburnum tinus 'Eve Price'	bushy :4 breaks :C	30-40cm	3L
Herbaceous Perennials, Grasses and Other Groundcover Plants				
15	Acanthus spinosus	C		2L
15	Agapanthus 'Loch Hope'	C		1L
192	Bergenia purpurascens var. delavayi	C		2L
468	Geranium macrorrhizum 'White-ness'	C		1L
80	Hypericum calycinum	C		0.5L
110	Miscanthus sinensis 'Morning Light'	C		3L
495	Pachysandra terminalis	C		1L

P:\BTU\08519\297000 Bexhill Hastings Phase 2 - Detailer Design\600 CAD\603 Drawings\3000 Landscape & Ecology
 FOR CONTINUATION, SEE DRAWING NO. 0015

Rev	Rev. Date	Purpose of revision	Drawn	Checked	Rev'd	Appr'd
C3	04/11/2015	Planting revs to match scheme changes	AS	RM	RM	PDF
C2	11/08/2015	Plant Schedule Updated to Match Changes	CC	AS	TD	JP
C1	02/03/2015	Rev. to match minor scheme layout changes	AS	RM	AB	JP
CO	28/07/2013	ISSUE FOR CONSTRUCTION	AS	RM	RM	AB

JACOBS
 Simpson House, 6 Cherry Orchard Road, Croydon, Surrey, CR9 6BE
 Tel: +44(0)208 686 8212 Fax: +44(0) 208 681 2499
 www.jacobs.com

Client: HOCHTIEF TAYLOR WOODROW
 Employer: HOCHTIEF TAYLOR WOODROW

Project: **BEXHILL TO HASTINGS LINK ROAD**

Drawing title: **PLANTING BELLE HILL SHEET 3 OF 3**

Drawing status: **FOR CONSTRUCTION**

Scale: 1:200 @ A1 DO NOT SCALE

Jacobs No.: B1297000

Client no.:

Drawing number: **B1297000-PH2/3000.01a/0017** Rev **C3**

Reproduction from the Ordnance Survey Map with the permission of the controller of Her Majesty's stationery office Crown copyright reserved Licence No. AL 100017326

This drawing is not to be used in whole or part other than for the intended purpose and project as defined on this drawing. Refer to the contract for full terms and conditions.