

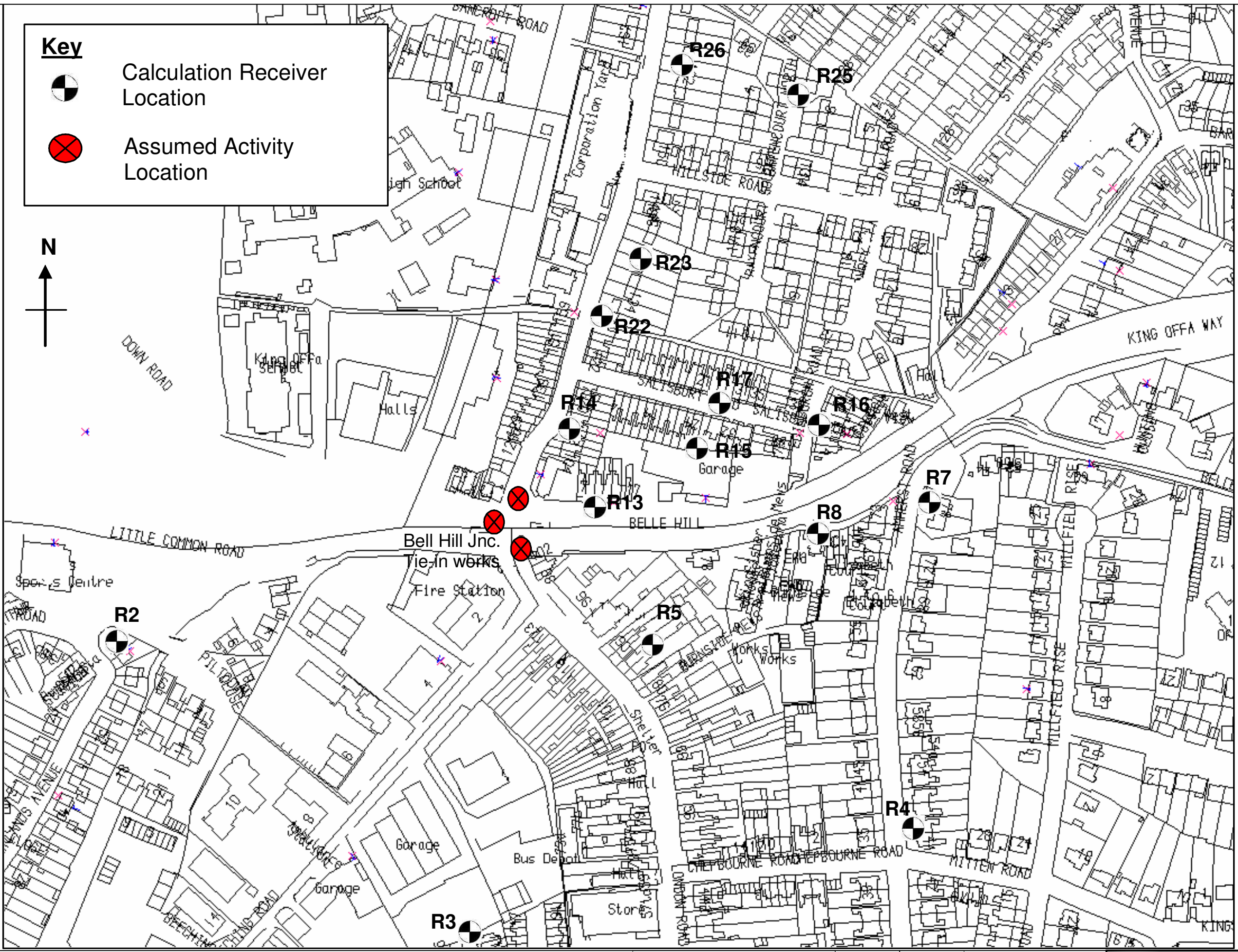
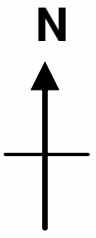



Key

-  Calculation Receiver Location
-  Assumed Activity Location



This map is reproduced from Ordnance Survey material with the permission of Ordnance Survey on behalf of the Controller of Her Majesty's Stationary Office © Crown copyright. Unauthorised reproduction infringes Crown copyright and may lead to prosecution or civil proceedings. 100019601, (year document published).

BEXHILL TO HASTINGS LINK ROAD

<p>Figure : 11.1</p> <p>Belle Hill Calculation Receiver Locations</p>	Scale	NTS	<p>Robert E Wilkins MSc, CEng MICE MInstWM MHT</p> <p>Director, Transport and Environment</p> <p>County Hall, St. Anne's Crescent</p> <p>Lewes, East Sussex BN1 1UE</p> <p>Telephone: 01273 481000</p>	<p>Transport & Environment Department</p> 
	Sheet	1 of 1		
	Revision	P1		