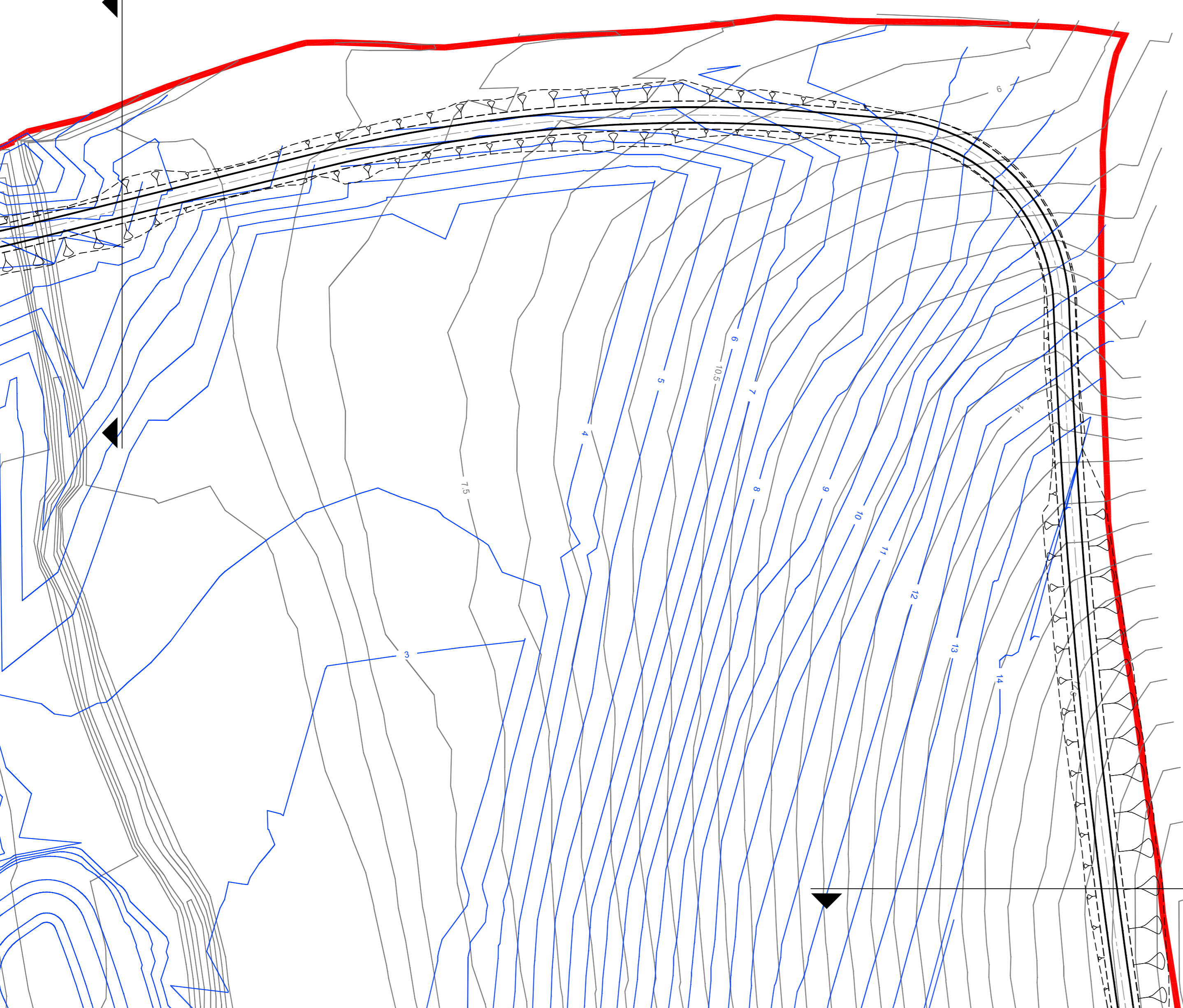


- NOTES**
1. Greenways and access track contours are not included in the proposed contour model.
 2. For clarity structure outline shown only.
 3. The scheme plan shows the engineered earthworks. Please note that in some area the landscape contours re-profiles the engineered earthworks (i.e. form the landscape bunds).

KEY

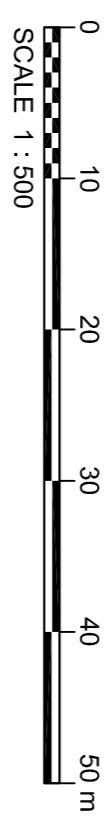
	Existing Contours @ 0.5m spacing
	Proposed Landscaping Contours @ 0.5m spacing
	A&NB Absorptive Noise Barrier (Height - 1.9m)
	REH1 Reflective Noise Barrier (Height - 1.8m)
	REH2 Reflective Noise Barrier (Height - 1.5m)
	Scheme Extents



FOR CONTINUATION.
 SEE DRAWING NO. 0080

FOR CONTINUATION.
 SEE DRAWING NO. 0091

Reproduction from the Ordnance Survey Map with the permission of the controller of Her Majesty's Stationery Office Crown Copyright reserved Licence No. AL 100017326



Rev	Rev. Date	INITIAL/ISSUE	LC	RNS	RNS	SSG
1	12/02/2013	INITIAL/ISSUE				

JACOBS
 Simpson House, 4 Cherry Orchard Road, Gorton, Salford, M6 6EJ
 Tel: +44(0)2048 666 8212 Fax: +44(0)2048 681 2499
 www.jacobs.com

HOCHTIEF
 INFRASTRUCTURE

TRVL
 TRAVEL

ecobase
 ecobase.co.uk

Client
 Employer

Project
BEXHILL TO HASTINGS LINK ROAD

Drawing title
**PLANNING CONDITION 14
 EXISTING & PROPOSED CONTOURS
 SHEET 22 OF 30**

Drawing status
ISSUE FOR REVIEW

Scale	1:500 @ A1	DO NOT SCALE
Jacobs No.	B1297000-PH2	
Client no.		
Drawing number	B1297000-PH2/0100.01a/0092	Rev
	R0	

This drawing is not to be used in whole or part other than for the intended purpose and project as defined on this drawing. Refer to the contract for full terms and conditions.