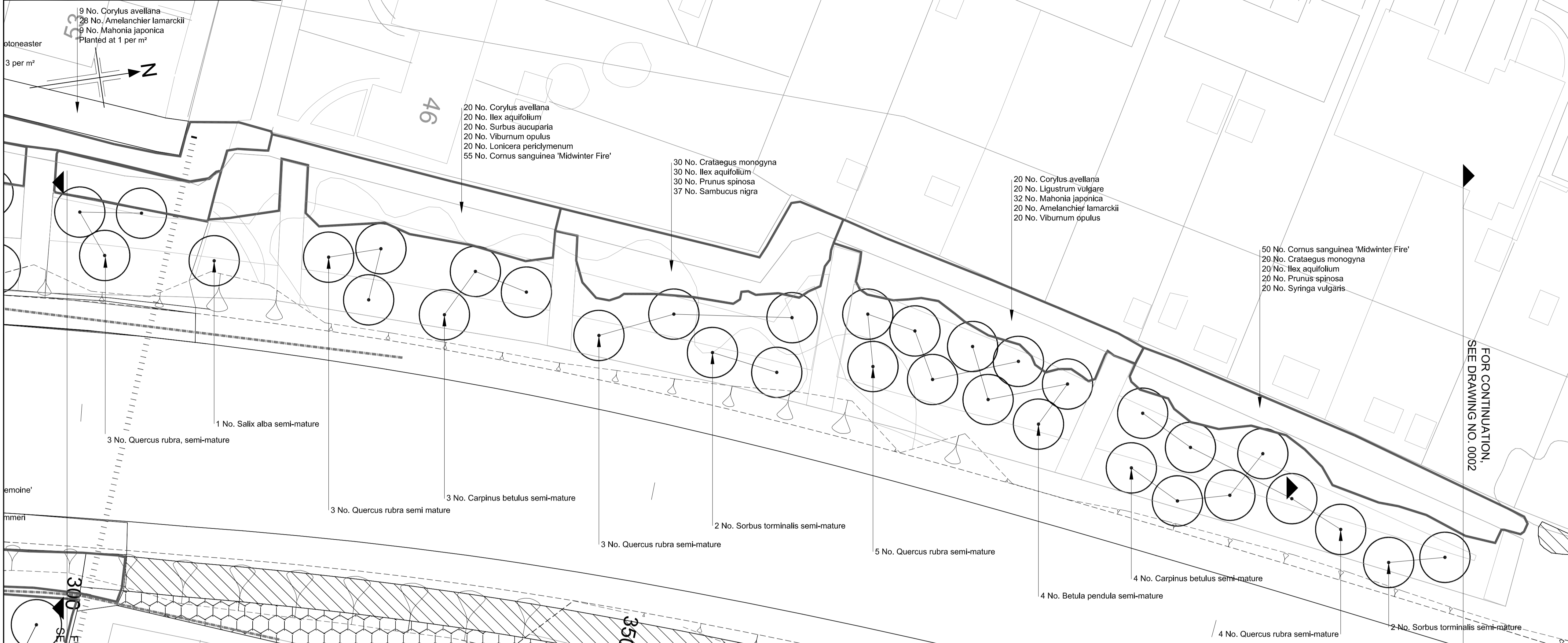


Drawing number / Rev  
**B1297000-PH2/3000.01a/0017 R1**



- NOTES**  
 1. All dimensions in metres unless otherwise stated.
- KEY**
- Semi-mature or multi-stem tree
  - Container grown tree or large shrub species planted without specified clear stem
  - Planting plot boundary
  - High woodland planting refer to drawing B1297000/3000.01a/0002 for details
  - Woodland edge planting refer to drawing B1297000/3000.01a/0002 for details

**SAFETY, HEALTH AND ENVIRONMENTAL INFORMATION**

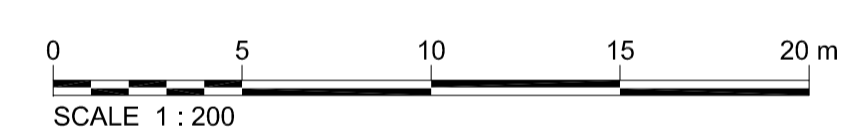
In addition to the hazards/risks normally associated with the types of work detailed on this drawing, note the following:

**CONSTRUCTION**  
 Likelihood of fly-tipped hazardous substances  
 Existing overhead and underground high voltage cables  
 Working adjacent to a railway  
 Working on slopes steeper than 1:3  
 Working near to site plant and other machinery

**MAINTENANCE / CLEANING**  
 Same as for construction

**DECOMMISSIONING / DEMOLITION**  
 Same as for construction

It is assumed that all works will be carried out by a competent contractor working, where appropriate, to an approved method statement



**PLANTING SCHEDULE FOR DRAWINGS  
 B1297000-PH2/3000.01a/0015 - 17**

| NUMBER                       | SPECIES                                    | SPECIFICATION                           | HEIGHT     | GIRTH   | POT SIZE         |
|------------------------------|--|---|------------|---------|------------------|
| <b>Trees</b>                 |  |   |            |         |                  |
| 3                            | <i>Alnus cordata</i>                       | 4x :semi-mature tree :2m clear stem :RB | min. 450cm | 25-30cm |                  |
| 4                            | <i>Betula pendula</i>                      | 4x :semi-mature tree :2m clear stem :RB | min. 450cm | 25-30cm |                  |
| 3                            | <i>Betula utilis</i> (jacquemontii)        | 4x :multi-stem (3 stems) :RB            | 300-350cm  |         |                  |
| 11                           | <i>Carpinus betulus</i>                    | 4x :semi-mature tree :2m clear stem :RB | min. 450cm | 25-30cm |                  |
| 1                            | <i>Catalpa bignonioides</i>                | 4x :semi-mature tree :2m clear stem :RB | 400-450cm  | 20-25cm |                  |
| 40                           | <i>Platanus x hispanica</i>                | 4x :semi-mature tree :2m clear stem :RB | min. 450cm | 25-30cm |                  |
| 2                            | <i>Prunus</i> 'Snow Goose'                 | 4x :semi-mature tree :2m clear stem :RB | min. 450cm | 25-30cm |                  |
| 59                           | <i>Quercus rubra</i>                       | 4x :semi-mature tree :2m clear stem :RB | min. 450cm | 25-30cm |                  |
| 1                            | <i>Salix alba</i>                          | 4x :semi-mature tree :2m clear stem :RB | min. 450cm | 25-30cm |                  |
| <b>Shrubs</b>                |  |   |            |         |                  |
| 1                            | <i>Abutilon x suntuense</i> 'Jermyns'      | branched :3 breaks :C                   | 20-30cm    |         | 2L               |
| 3                            | <i>Acacia baileyana</i>                    | half standard :C                        | 180-200cm  |         | 12L              |
| 94                           | <i>Amelanchier lamarckii</i>               | feathered :3 breaks :C                  | 150-175cm  |         | 15L              |
| 415                          | <i>Brachyglottis greyi</i>                 | branched :3 breaks :C                   | 20-30cm    |         | 2L               |
| 330                          | <i>Ceanothus</i> 'Concha'                  | branched :3 breaks :C                   | 20-30cm    |         | 2L               |
| 533                          | <i>Choisya</i> 'Aztec Pearl'               | bushy :4 breaks :C                      | 30-40cm    |         | 3L               |
| 342                          | <i>Cistus</i> 'Pat'                        | bushy :4 breaks :C                      | 30-40cm    |         | 3L               |
| 105                          | <i>Cornus sanguinea</i> 'Midwinter Fire'   | branched :3 breaks : B :1+2             | 60-80cm    |         | 3L               |
| 157                          | <i>Corylus avellana</i>                    | branched :3 breaks :C                   | 60-80cm    |         | 3L               |
| 417                          | <i>Cotoneaster conspicuus</i> 'Decorus'    | branched :3 breaks :C                   | 20-30cm    |         | 2L               |
| 780                          | <i>Cotoneaster dammeri</i>                 | 20-30cm diameter :bushy :3 breaks :C    |            |         | 2L               |
| 348                          | <i>Cotoneaster salicifolius</i> 'Pendulus' | branched :2 breaks :C                   | 40-60cm    |         | 3L               |
| 651                          | <i>Crataegus monogyna</i>                  | Transplant : B :1+1                     | 40-60cm    |         | 3L               |
| 72                           | <i>Forsythia intermedia</i> 'Lynwood'      | branched :4 breaks :C                   | 40-60cm    |         | 4L               |
| 881                          | <i>Griselinia littoralis</i>               | bushy :3 breaks :C                      | 40-60cm    |         | 3L               |
| 579                          | <i>Hebe</i> 'Carl Teschner'                | bushy :3 breaks :C                      | 30-40cm    |         | 3L               |
| 202                          | <i>Ilex aquifolium</i>                     | bushy :2 breaks :C                      | 30-40cm    |         | 2L               |
| 20                           | <i>Ligustrum vulgare</i>                   | branched :3 breaks :B                   | 60-80cm    |         |                  |
| 1035                         | <i>Lonicera pileata</i> 'Moss Green'       | 30-40cm diameter :bushy :6breaks :C     |            |         | 3L               |
| 20                           | <i>Lonicera periclymenum</i>               | Several Shoots :2 breaks :C             | 60-80cm    |         | 3L               |
| 56                           | <i>Mahonia japonica</i>                    | leaders :C                              | 30-40cm    |         | 3L               |
| 522                          | <i>Oleana x macrodonta</i>                 | bushy :4 breaks :C                      | 40-60cm    |         | 3L               |
| 108                          | <i>Philadelphus</i> 'Belle Etoile'         | branched :4 breaks :C                   | 30-40cm    |         | 3L               |
| 15                           | <i>Philadelphus coronarius</i>             | branched :4 breaks :C                   | 30-40cm    |         | 3L               |
| 50                           | <i>Prunus spinosa</i>                      | 1+1 :Leader :BR                         | 40-60cm    |         |                  |
| 2                            | <i>Rhus glabra</i> 'Laciniata'             | two shoots :C                           | 60-80cm    |         | 4L               |
| 297                          | <i>Rosa rubiginosa</i>                     | bushy :strong :C                        | 30-40cm    |         | 2L               |
| 630                          | <i>Rosmarinus</i> 'Severn Seas'            | bushy :4 breaks :C                      | 40-60cm    |         | 3L               |
| 37                           | <i>Sambucus nigra</i>                      | branched :2 breaks : B :1+0             | 40-60cm    |         |                  |
| 36                           | <i>Sorbus aucuparia</i>                    | Transplant : B :1+1                     | 60-80cm    |         |                  |
| 10                           | <i>Sorbus torminalis</i>                   | 1+2 :Transplant :B                      | 60-80cm    |         |                  |
| 675                          | <i>Spartium junceum</i>                    | branched :3 breaks :C                   | 40-60cm    |         | 2L               |
| 145                          | <i>Syringa vulgaris</i>                    | branched :2 breaks :C                   | 40-60cm    |         | 3L               |
| 28                           | <i>Syringa vulgaris</i> 'Madame Lemoine'   | branched :2 breaks :C                   | 40-60cm    |         | 3L               |
| 272                          | <i>Viburnum tinus</i>                      | bushy :4 breaks :C                      | 30-40cm    |         | 3L               |
| 158                          | <i>Viburnum opulus</i>                     | branched :2 breaks :BR                  | 40-60cm    |         |                  |
| <b>Herbaceous Perennials</b> |  |   |            |         |                  |
| 279                          | <i>Bergenia</i> 'Silberlicht'              | C                                       |            |         | 2 litre full pot |
| 495                          | <i>Pachysandra terminalis</i>              | C                                       |            |         | 2 litre full pot |

P:\BTU\OBS\B1297000 Bexhill Hastings\Phase 2 - Detailed Design\600 CAD\603 Drawings\3000 Landscape & Ecology

Reproduction from the Ordnance Survey Map with the permission of the controller of Her Majesty's stationery office. Crown copyright reserved Licence No. AL 100017326

|     |            |                             |       |         |       |         |
|-----|------------|-----------------------------|-------|---------|-------|---------|
| R1  | 09/01/2013 | CHANGES TO AMENITY PLANTING | DH    | AS      | AS    | AB      |
| R0  | 14/12/2012 | INITIAL ISSUE               | RM    | AS      | AS    | AB      |
| Rev | Rev. Date  | Purpose of revision         | Drawn | Checked | Rev'd | Apprv'd |

**JACOBS**

Simpson House, 8 Cherry Orchard Road, Croydon, Surrey, CR9 6BE  
 Tel: +44(0)208 686 8212 Fax: +44(0) 208 681 2499  
 www.jacobs.com

|        |          |          |                |
|--------|----------|----------|----------------|
| Client | HOCHTIEF | Employer | TAYLOR WOODSON |
|--------|----------|----------|----------------|

Project  
**BEXHILL TO HASTINGS LINK ROAD**

Drawing title  
**PLANTING BELLE HILL SHEET 3 OF 3**

Drawing status  
**ISSUE FOR REVIEW**

|            |            |              |
|------------|------------|--------------|
| Scale      | 1:200 @ A1 | DO NOT SCALE |
| Jacobs No. | B1297000   |              |
| Client no. |            |              |

Drawing number  
**B1297000-PH2/3000.01a/0017 R1**

This drawing is not to be used in whole or part other than for the intended purpose and project as defined on this drawing. Refer to the contract for full terms and conditions.