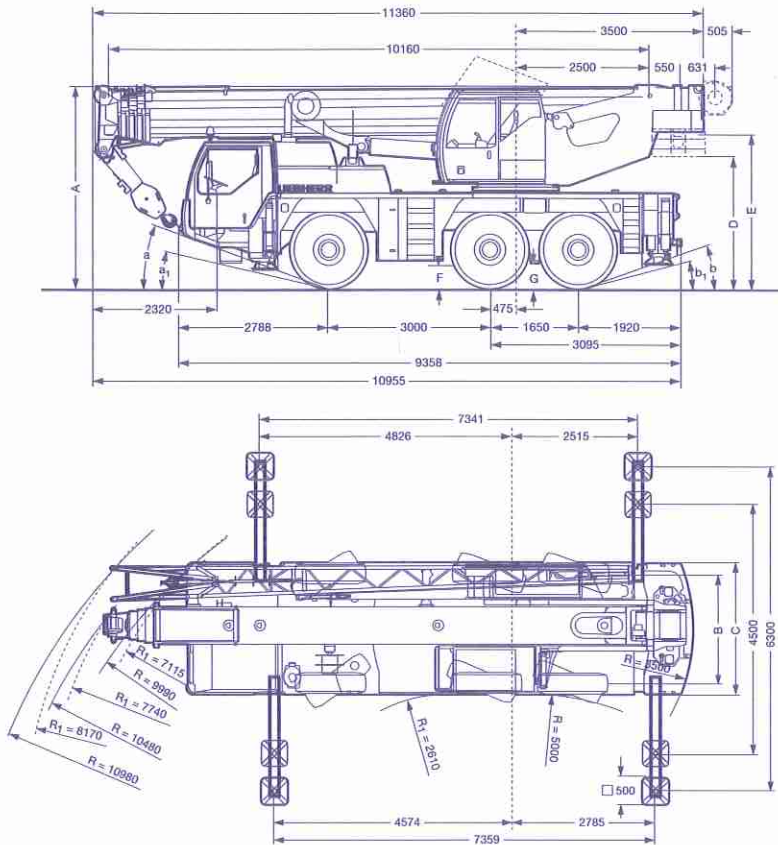


Liebherr LTM 1055

Dimensions



55
Tonne

All Terrain
Cranes

Tyre Width	Dimensions (mm)											
	A	*A 100mm	B	C	D	E	F	G	α	α^1	β^1	β
14.00 R25	3700	3600	2123	2540	2310	2820	410	370	20°	14°	20°	14°
16.00 R25	3750	3650	2231	2680	2360	2870	460	420	21°	15°	21°	15°

* lowered

Load Reductions - If Fly Jib fitted to Main Boom in Stowed Position

Boom Length (m)	10.2	13.6	17	20.5	23.9	27.3	30.8	34.2	37.6	40
Load to be Deducted (t)	0.46	0.34	0.27	0.23	0.19	0.17	0.15	0.14	0.12	0.12

Hookblock

Capacity (t)	46.5	30.5	13.4	4.5
Weight (t)	0.33	0.28	0.2	0.08

The charts that have been included have been reproduced from manufacturer specifications, and while every effort has been made to ensure their accuracy, we do not accept any responsibility for errors or omissions. We also need to draw your attention to the guidance notes on page 47 to assist you with your crane selection.